



Test Report

No.: SL119102902474TX

Date: Oct 23, 2019

Page 1 of 3

EXPED AG
HARDSTRASSE 81
ZURICH,8004,SWITZERLAND

The following sample was submitted and identified by the client as:

One sample of SIM COMFORT 7.5 LW.

Brand : EXPED
End Use : Camping Mat
Lot No. : 9110
Season : 2020
Children Sleepwear : No
Country Of Origin : Taiwan

Sample Receiving Date : Oct 10, 2019

Test Performing Period : Oct 10, 2019 – Oct 23, 2019

Test Performed : Selected test(s) as requested by applicant against specified requirement (details please refer to result page(s)).

* * * *

Test Results : Please refer to the next page(s).

Signed for and on behalf of
SGS Hong Kong Ltd.

Carmen Ng
Senior Technical Executive

This document is issued by the Company subject to its General Conditions of Service printed overleaf, available on request or accessible at <http://www.sgs.com/en/Terms-and-Conditions.aspx> and, for electronic format documents, subject to Terms and Conditions for Electronic Documents at <http://www.sgs.com/en/Terms-and-Conditions/Terms-e-Documents.aspx>. Attention is drawn to the limitation of liability, indemnification and jurisdiction issues defined therein. Any holder of this document is advised that information contained hereon reflects the Company's findings at the time of its intervention only and within the limits of Client's instructions, if any. The Company's sole responsibility is to its Client and this document does not exonerate parties to a transaction from exercising all their rights and obligations under the transaction documents. This document cannot be reproduced except in full, without prior written approval of the Company. Any unauthorized alteration, forgery or falsification of the content or appearance of this document is unlawful and offenders may be prosecuted to the fullest extent of the law.

Unless otherwise stated the results shown in this test report refer only to the sample(s) tested and such sample(s) are retained for 30 days only.



Test Report

No.: SL119102902474TX

Date: Oct 23, 2019

Page 2 of 3

Test Results :

Thermal Resistance of Sleeping Pad (ASTM F3340-18)

Preconditions:

Ambient temperature: 20±0.5°C

Relative humidity: 35±5%

Inner pressure: 3.7 kPa

Stored in test environmental condition: Minimum 4 hours

Test conditions:

Ambient temperature: 20±0.5°C

Relative humidity: 35±5%

Hotplate temperature: 35±0.1°C

Cold plate temperature: 5±0.1°C

Inner pressure before compression: 3.5±0.2 kPa

External pressure: 2.0±0.1 kPa

Result:

Sample – SIM Comfort 7.5LW

Sample A	Location measurement, R _{ct} (K m ² /W)				Standard Deviation	Coefficient Variance
	Location 1	Location 2	Location 3	Average		
Sample A1	1.349	1.357	1.269	1.325	0.049	3.7%
Sample A2	1.358	1.366	1.309	1.344	0.031	2.3%
Sample A3	1.364	1.359	1.345	1.356	0.010	0.7%
RSI value (K m ² /W)				*RSI-1.342	0.032	2.4%
R value (ft ² ·°F·h/Btu)				R-7.6	0.032	2.4%

Remark:

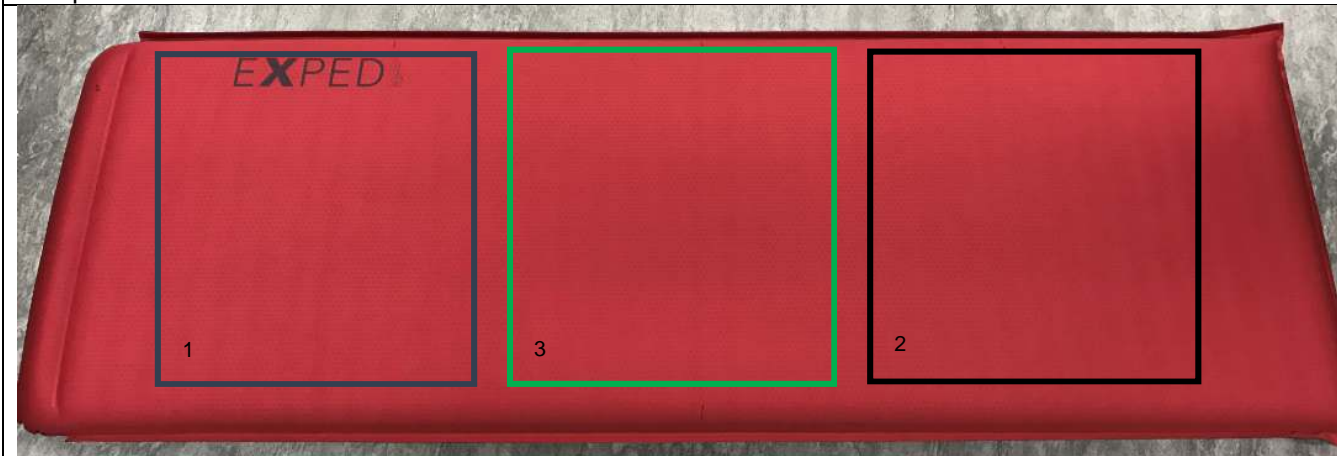
- No. of specimen used per sample: 3
- The raw value is RSI- (the original measurement). *RSI was adjusted value using the correlation factor developed by using three NIST Standard Reference Materials, as required in Appendix 2 of ASTM F3340-18. To convert RSI-value to R-value, multiple by 5.67862

This document is issued by the Company subject to its General Conditions of Service printed overleaf, available on request or accessible at <http://www.sgs.com/en/Terms-and-Conditions.aspx> and, for electronic format documents, subject to Terms and Conditions for Electronic Documents at <http://www.sgs.com/en/Terms-and-Conditions/Terms-e-Documents.aspx>. Attention is drawn to the limitation of liability, indemnification and jurisdiction issues defined therein. Any holder of this document is advised that information contained hereon reflects the Company's findings at the time of its intervention only and within the limits of Client's instructions, if any. The Company's sole responsibility is to its Client and this document does not exonerate parties to a transaction from exercising all their rights and obligations under the transaction documents. This document cannot be reproduced except in full, without prior written approval of the Company. Any unauthorized alteration, forgery or falsification of the content or appearance of this document is unlawful and offenders may be prosecuted to the fullest extent of the law.

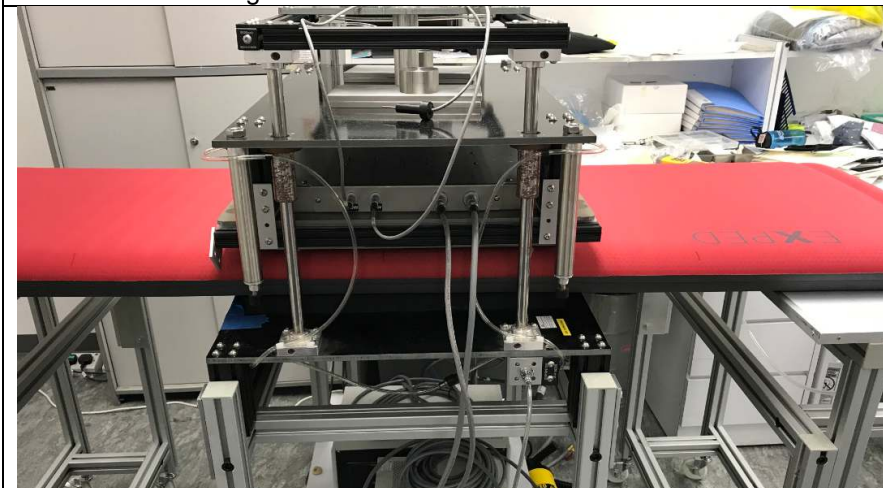
Unless otherwise stated the results shown in this test report refer only to the sample(s) tested and such sample(s) are retained for 30 days only.

Photo:

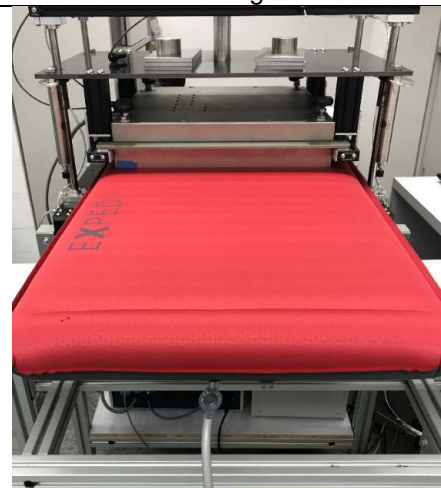
Sample A



Side View of Testing



Front View of Testing



*** End of Report ***

This document is issued by the Company subject to its General Conditions of Service printed overleaf, available on request or accessible at <http://www.sgs.com/en/Terms-and-Conditions.aspx> and, for electronic format documents, subject to Terms and Conditions for Electronic Documents at <http://www.sgs.com/en/Terms-and-Conditions/Terms-e-Documents.aspx>. Attention is drawn to the limitation of liability, indemnification and jurisdiction issues defined therein. Any holder of this document is advised that information contained herein reflects the Company's findings at the time of its intervention only and within the limits of Client's instructions, if any. The Company's sole responsibility is to its Client and this document does not exonerate parties to a transaction from exercising all their rights and obligations under the transaction documents. This document cannot be reproduced except in full, without prior written approval of the Company. Any unauthorized alteration, forgery or falsification of the content or appearance of this document is unlawful and offenders may be prosecuted to the fullest extent of the law.

Unless otherwise stated the results shown in this test report refer only to the sample(s) tested and such sample(s) are retained for 30 days only.